



RISE^{NM}

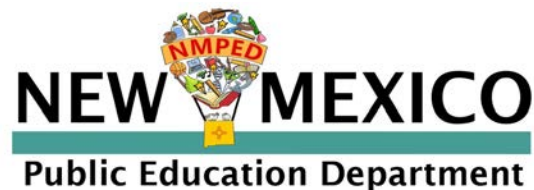
Research Informing Success in Education

New Mexico's Longitudinal Data System:
Data Empowering New Mexicans from Cradle to Career

PROJECT SUMMARY

PARTNERS

- RISE-NM, New Mexico's Longitudinal Data System Project, is a collaboration among the:
 - Early Childhood Education and Care Department (ECECD)
 - Public Education Department (PED)
 - Higher Education Department (HED)
 - Department of Workforce Solutions (DWS)



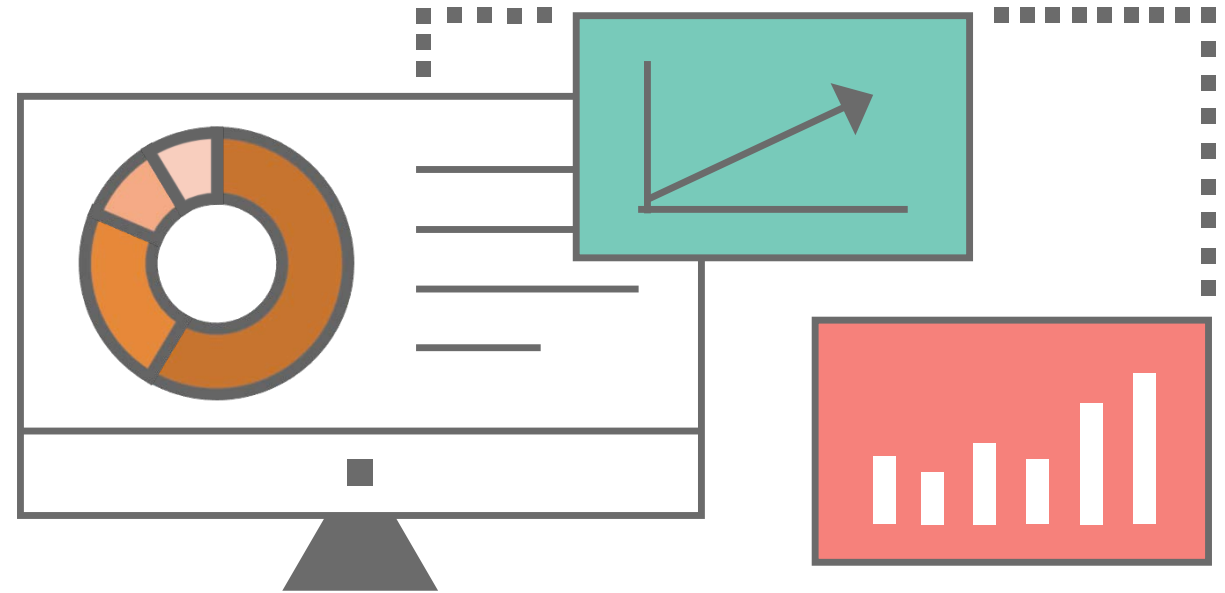
PURPOSE

New Mexico's Longitudinal Data System Project, also known as RISE-NM, will aggregate and link data from partner agencies into a single cloud data platform to evaluate education and workforce efforts in New Mexico. The project will analyze data, develop visualizations and reports, establish data governance policies and processes, respond to research requests, and provide the products of these efforts to state leaders, state education agencies (SEAs), workforce developers, practitioners, researchers, policymakers, the public, and others so they can:

- Obtain comprehensive and verified educational and workforce data and trends
- See aggregate trends in student and workforce performance
- Leverage data to improve student outcomes, workforce outcomes, and improve equity
- Perform predictive analysis
- Obtain assistance with state and federal reporting
- Make data-driven policy, programmatic, and investment decisions
- Make data-driven educational and career decisions

PRODUCT DESCRIPTION

- RISE-NM will be:
 - A highly secure cloud-hosted data platform
 - It will link early childhood through workforce (PK-20W+) data from partner agencies



DATA ELEMENTS

RISE-NM may include the data elements below. All RISE-NM reports will be generated from *deidentified* data, so privacy is protected.

- Student
 - Demographics
 - Enrollment
 - Dual-credit status
 - Remediation status
 - Educational program participation
 - Financial aid
- Teacher
 - Preparation
 - Certification and Licensure
- Workforce
 - Employment
 - Industry
 - Earnings

PROJECT BENEFITS

1. RISE-NM will include data from the entire state, not just a single school district or program.
2. Securely connect data from multiple education and employment programs to show the relationships among the programs and who they serve.
3. View data over time to allow users to measure progress and examine the relationships between earlier experiences and long-term outcomes.
4. Examine long-term trends for different groups of students and connect data to informed decision- and policy-making.
5. With this system's data, researchers can help educators, policymakers, and the community understand more about the connections between education programs and student outcomes.

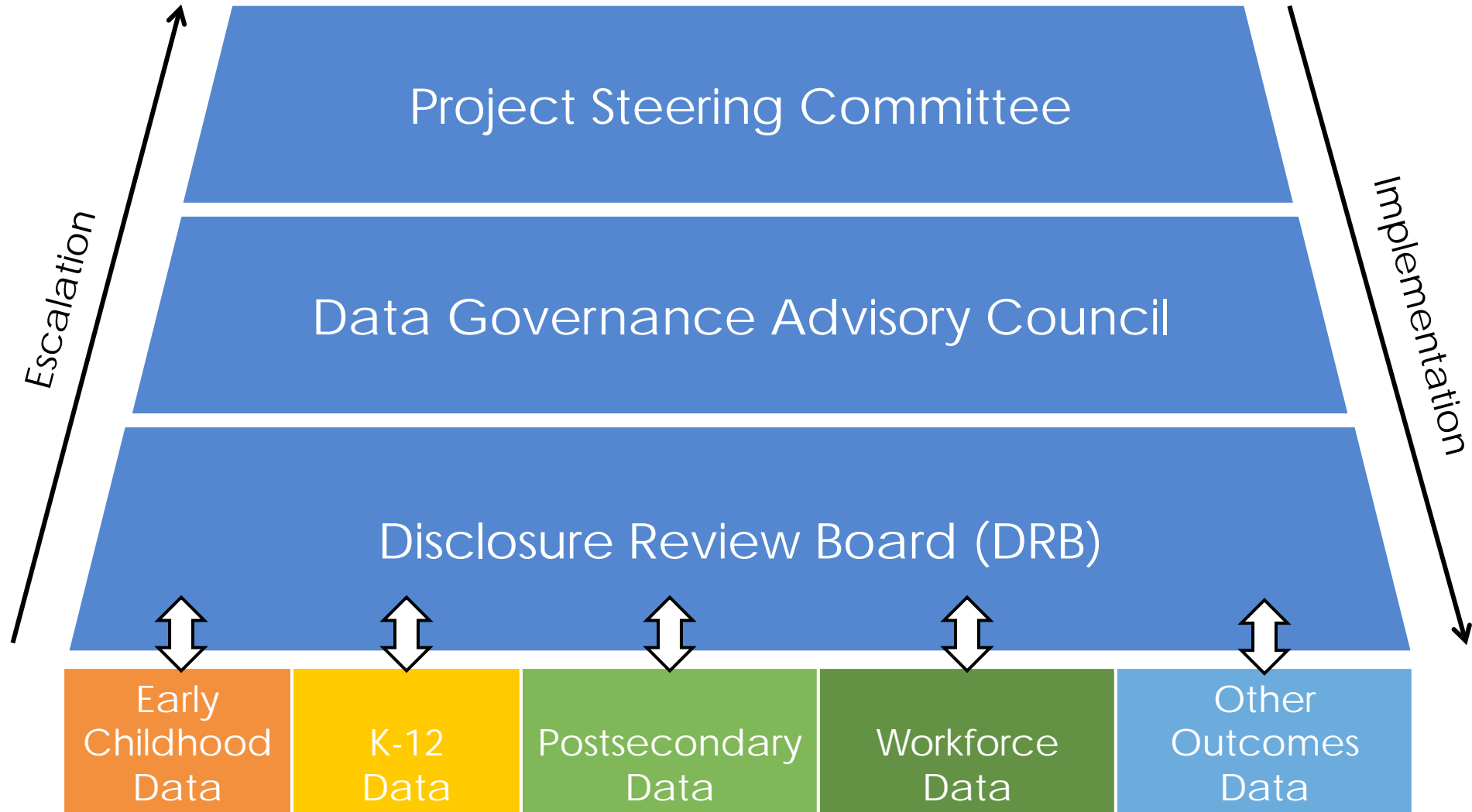
PROJECT BENEFITS (continued)

6. Lawmakers and policymakers can evaluate how best to fund education, training, and workforce programs and how to improve the policies that govern them.
7. The information provided by the NMLDS allows New Mexico (NM) to use evidence to answer questions more effectively about its education and workforce systems and, ultimately, to better serve students and workers.
8. Researchers can help by examining trends to inform policies and programs and answering questions related to topics like college and career readiness or closing achievement gaps.
9. Postsecondary institutions can assess how well their programs align to workforce needs and how well their graduates are prepared to contribute to high-demand career fields.

PROJECT BENEFITS (continued)

11. School administrators can see how graduating classes fare in college and in the workforce.
12. Researchers can help by examining trends to inform policies and programs and answering questions related to topics like college and career readiness or closing achievement gaps.
13. Lawmakers and policymakers can evaluate how best to fund education, training, and workforce programs and how to improve the policies that govern them.
14. Ensure compliance with relevant data privacy laws.

PROJECT GOVERNANCE STRUCTURE



PROJECT STEERING COMMITTEE

Membership

- The membership of the Project Steering Committee (PSC) is comprised of representatives of the agencies partnering on the NMLDS Project.
- The PSC is staffed with three members from each partner agency.

Monthly Meetings

- The PSC meets once per month on the first Friday of every month.



RISE^{NM}

Research Informing Success in Education

PROJECT VALUES

- Accountability
- Collaboration
- Equity
- Integrity
- Privacy
- Security
- Sustainability
- Trustworthy Data